



212 NATHAN ST.

DISCLAIMER : This plan was produced prior to con_x0002_struction and has been prepared for marketing purposes only. The information is believed to be correct but is not guaranteed. Changes may be made during construction and dimensions, areas, fittings and finishes are subject to change in ac_x0002_cordance with the contract for sale. Prospective purchasers must rely on their contract for sale for the list of inclusions and other details.



212 NATHAN ST.

DISCLAIMER : This plan was produced prior to con_x0002_structuon and has been prepared for marketing purposes only. The information is believed to be correct but is not guaranteed. Changes may be made during construction and dimensions, areas, fittings and finishes are subject to change in ac_x0002_cordance with the contract for sale. Prospective purchasers must rely on their contract for sale for the list of inclusions and other details.



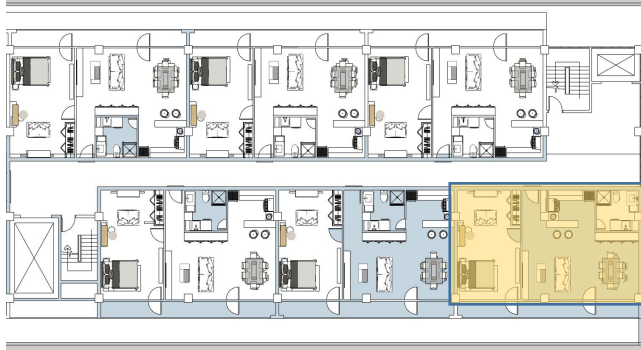
212 NATHAN ST.

DISCLAIMER : This plan was produced prior to con_x0002_struction and has been prepared for marketing purposes only. The information is believed to be correct but is not guaranteed. Changes may be made during construction and dimensions, areas, fittings and finishes are subject to change in ac_x0002_cordance with the contract for sale. Prospective purchasers must rely on their contract for sale for the list of inclusions and other details.



212 NATHAN ST.

DISCLAIMER : This plan was produced prior to con_x0002_structuon and has been prepared for marketing purposes only. The information is believed to be correct but is not guaranteed. Changes may be made during construction and dimensions, areas, fittings and finishes are subject to change in ac_x0002_cordance with the contract for sale. Prospective purchasers must rely on their contract for sale for the list of inclusions and other details.



Unit 1 end unit

Living - 18.10 sq.mts.
Dining - 10.40 sq.mts
Kitchen - 7.10 sq.mts
T & B - 6.75 sq.mts
Bedroom-25.80 sq.mts.
Carpark - 20.35 sq.mts.
Veranda - 11.00 sq.mts.

TOTAL - 99.50 SQ. MTS



212 NATHAN ST.

DISCLAIMER : This plan was produced prior to con_x0002_structurion and has been prepared for marketing purposes only. The information is believed to be correct but is not guaranteed. Changes may be made during construction and dimensions, areas, fittings and finishes are subject to change in ac_x0002_cordance with the contract for sale. Prospective purchasers must rely on their contract for sale for the list of inclusions and other details.



Unit 2 mid unit

Living - 18.10 sq.mts.
 Dining - 10.40 sq.mts
 Kitchen - 7.10 sq.mts
 T & B - 6.75 sq.mts
 Bedroom-25.80 sq.mts.
 Carpark - 20.35 sq.mts.
 Veranda - 11.00 sq.mts.

TOTAL - 99.50 SQ. MTS.



212 NATHAN ST.

DISCLAIMER : This plan was produced prior to construction and has been prepared for marketing purposes only. The information is believed to be correct but is not guaranteed. Changes may be made during construction and dimensions, areas, fittings and finishes are subject to change in accordance with the contract for sale. Prospective purchasers must rely on their contract for sale for the list of inclusions and other details.



Unit 3 end unit

Living - 18.10 sq.mts.

Dining - 10.40 sq.mts

Kitchen - 7.10 sq.mts

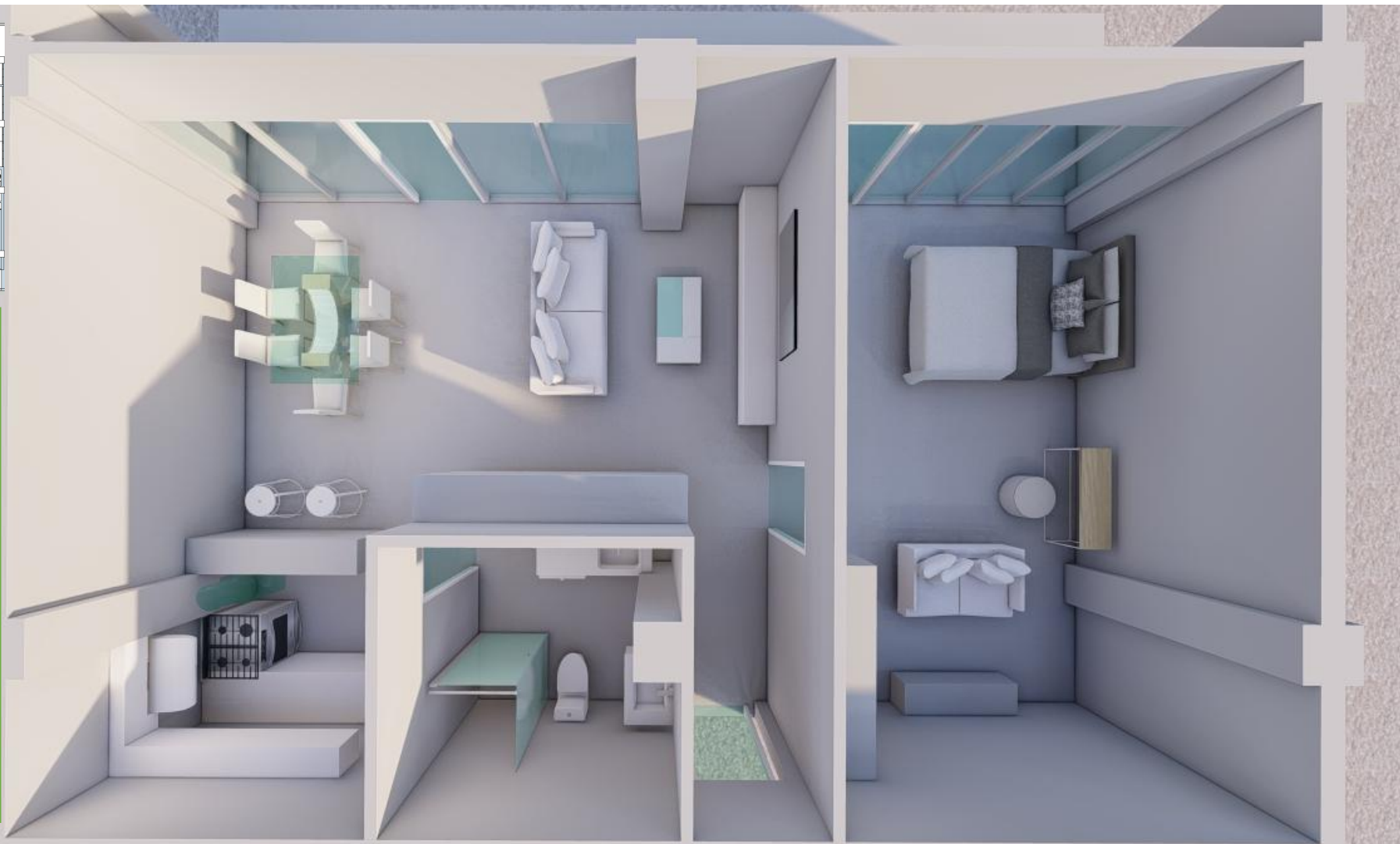
T & B - 6.75 sq.mts

Bedroom-25.80 sq.mts.

Carpark - 20.35 sq.mts.

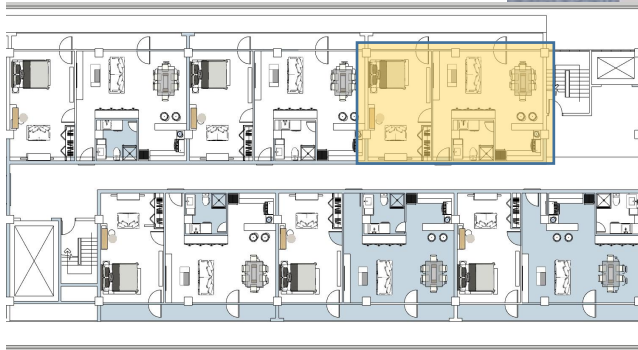
Veranda - 11.00 sq.mts.

TOTAL - 99.50 SQ. MTS.



212 NATHAN ST.

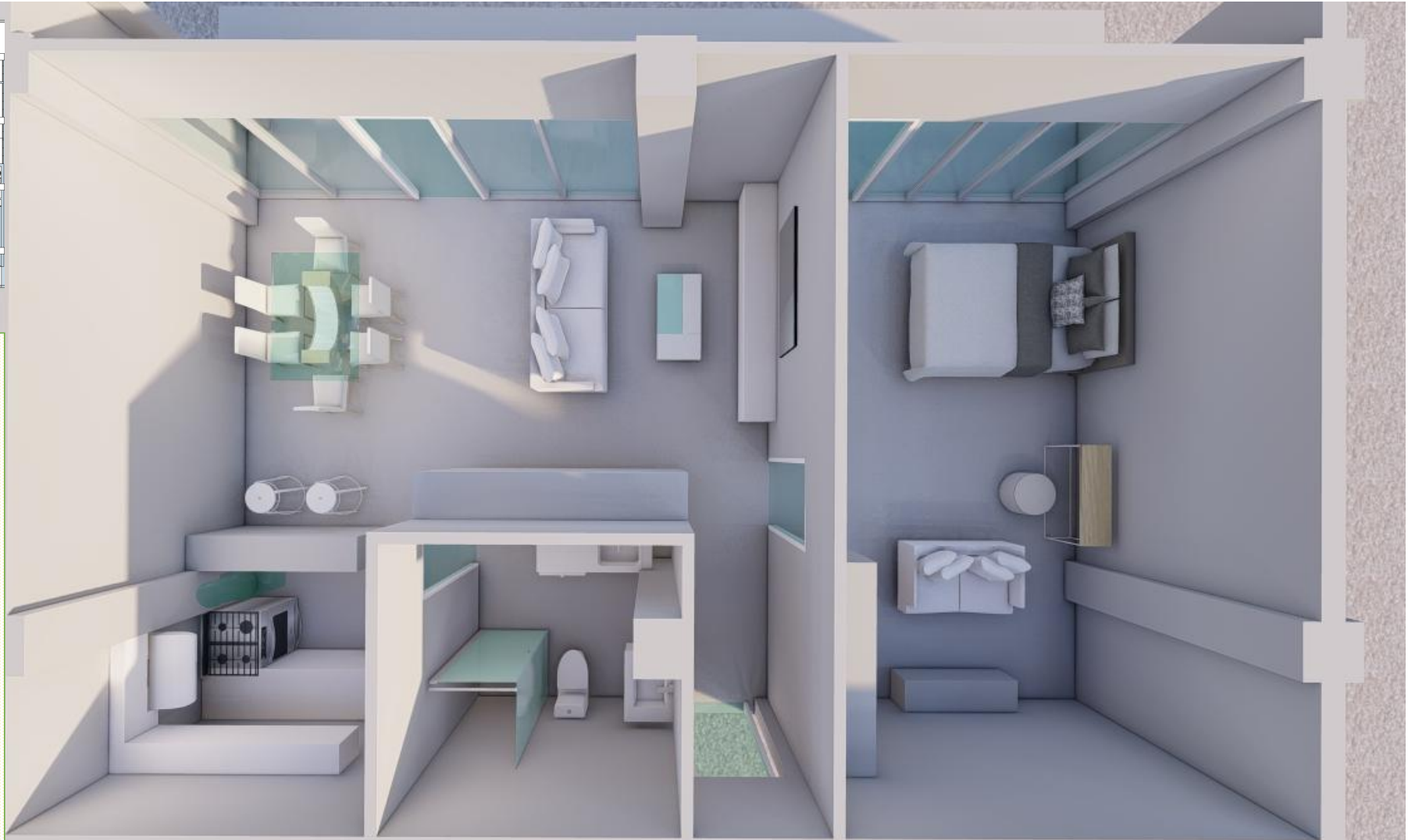
DISCLAIMER : This plan was produced prior to con_x0002_struction and has been prepared for marketing purposes only. The information is believed to be correct but is not guaranteed. Changes may be made during construction and dimensions, areas, fittings and finishes are subject to change in ac_x0002_cordance with the contract for sale. Prospective purchasers must rely on their contract for sale for the list of inclusions and other details.



Unit 4 end unit

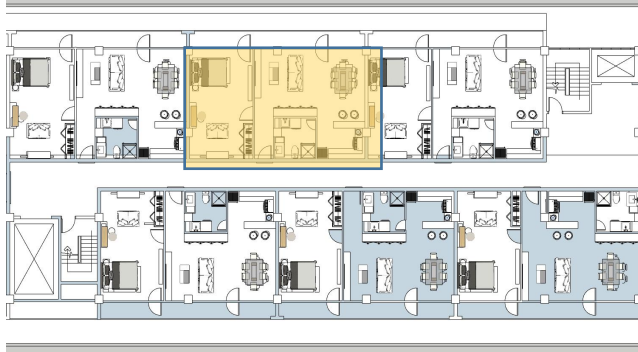
Living - 18.10 sq.mts.
 Dining - 10.40 sq.mts
 Kitchen - 7.10 sq.mts
 T & B - 6.75 sq.mts
 Bedroom-25.80 sq.mts.
 Carpark - 20.35 sq.mts.
 Veranda - 11.00 sq.mts.

TOTAL - 99.50 SQ. MTS



212 NATHAN ST.

DISCLAIMER : This plan was produced prior to con_x0002_struction and has been prepared for marketing purposes only. The information is believed to be correct but is not guaranteed. Changes may be made during construction and dimensions, areas, fittings and finishes are subject to change in ac_x0002_cordance with the contract for sale. Prospective purchasers must rely on their contract for sale for the list of inclusions and other details.



Unit 5 mid unit

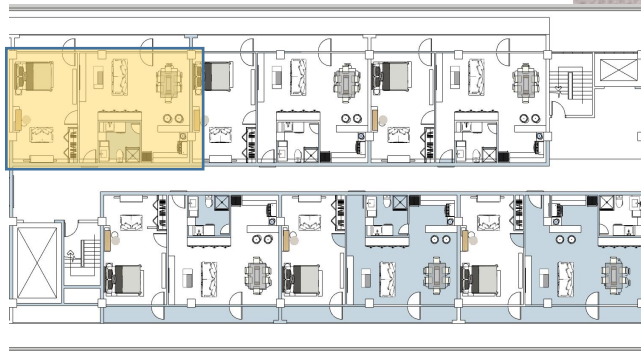
Living - 18.10 sq.mts.
Dining - 10.40 sq.mts
Kitchen - 7.10 sq.mts
T & B - 6.75 sq.mts
Bedroom-25.80 sq.mts.
Carpark - 20.35 sq.mts.
Veranda - 11.00 sq.mts.

TOTAL - 99.50 SQ. MTS



212 NATHAN ST.

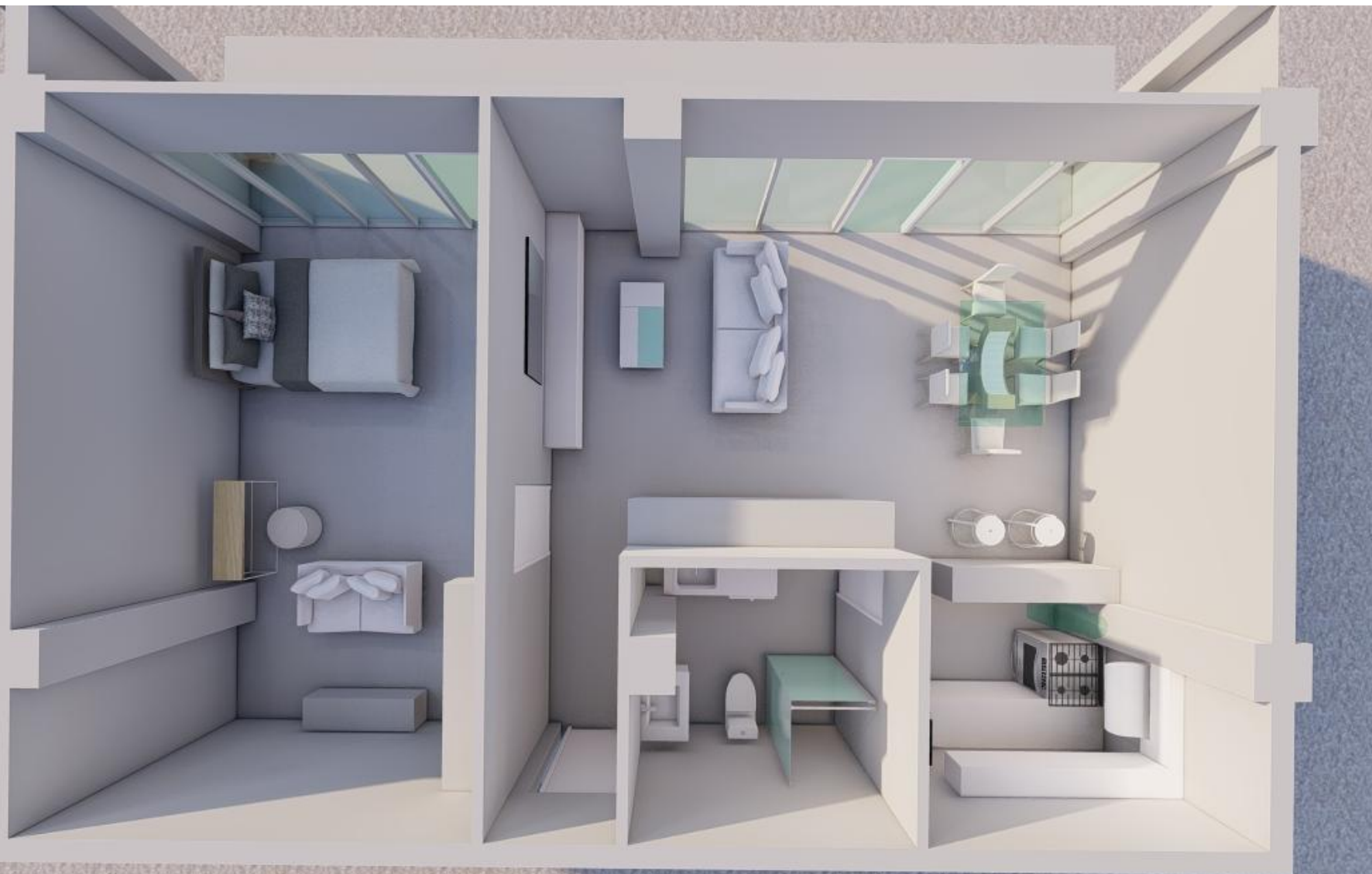
DISCLAIMER : This plan was produced prior to con_x0002_structuon and has been prepared for marketing purposes only. The information is believed to be correct but is not guaranteed. Changes may be made during construction and dimensions, areas, fittings and finishes are subject to change in ac_x0002_cordance with the contract for sale. Prospective purchasers must rely on their contract for sale for the list of inclusions and other details.



Unit 6 end unit

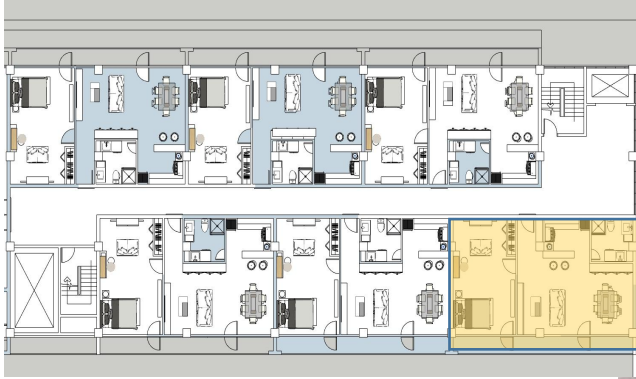
Living - 18.10 sq.mts.
 Dining - 10.40 sq.mts
 Kitchen - 7.10 sq.mts
 T & B - 6.75 sq.mts
 Bedroom-25.80 sq.mts.
 Carpark - 20.35 sq.mts.
 Veranda - 11.00 sq.mts.

TOTAL - 99.50 SQ. MTS



212 NATHAN ST.

DISCLAIMER : This plan was produced prior to con_x0002_struction and has been prepared for marketing purposes only. The information is believed to be correct but is not guaranteed. Changes may be made during construction and dimensions, areas, fittings and finishes are subject to change in ac_x0002_cordance with the contract for sale. Prospective purchasers must rely on their contract for sale for the list of inclusions and other details.



Unit 7 end unit

Living - 18.10 sq.mts.

Dining - 10.40 sq.mts

Kitchen - 7.10 sq.mts

T & B - 6.75 sq.mts

Bedroom-25.80 sq.mts.

Carpark - 20.35 sq.mts.

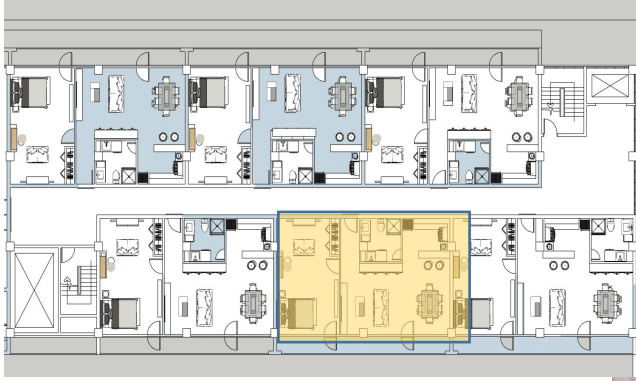
Veranda - 11.00 sq.mts.

TOTAL - 99.50 SQ. MTS



212 NATHAN ST.

DISCLAIMER : This plan was produced prior to construction and has been prepared for marketing purposes only. The information is believed to be correct but is not guaranteed. Changes may be made during construction and dimensions, areas, fittings and finishes are subject to change in accordance with the contract for sale. Prospective purchasers must rely on their contract for sale for the list of inclusions and other details.



Unit 8 mid unit

Living - 18.10 sq.mts.

Dining - 10.40 sq.mts

Kitchen - 7.10 sq.mts

T & B - 6.75 sq.mts

Bedroom-25.80 sq.mts.

Carpark - 20.35 sq.mts.

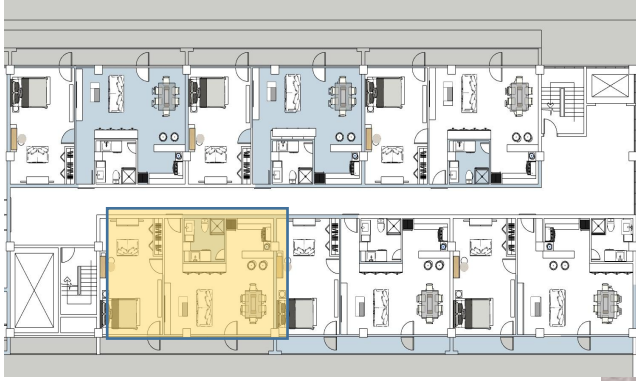
Veranda - 11.00 sq.mts.

TOTAL - 99.50 SQ. MTS

212 NATHAN ST.



DISCLAIMER : This plan was produced prior to construction and has been prepared for marketing purposes only. The information is believed to be correct but is not guaranteed. Changes may be made during construction and dimensions, areas, fittings and finishes are subject to change in accordance with the contract for sale. Prospective purchasers must rely on their contract for sale for the list of inclusions and other details.



Unit 9 end unit

Living - 18.10 sq.mts.

Dining - 10.40 sq.mts

Kitchen - 7.10 sq.mts

T & B - 6.75 sq.mts

Bedroom-25.80 sq.mts.

Carpark - 20.35 sq.mts.

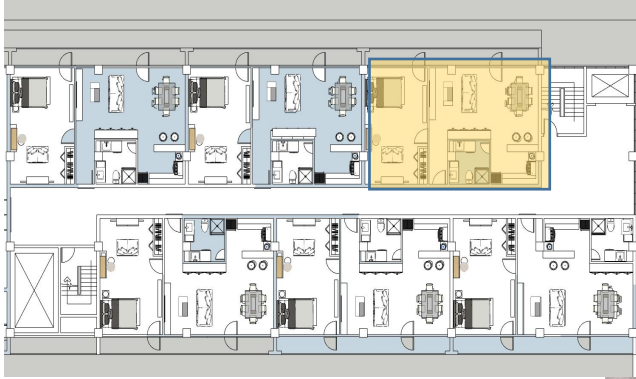
Veranda - 11.00 sq.mts.

TOTAL - 99.50 SQ. MTS



212 NATHAN ST.

DISCLAIMER : This plan was produced prior to construction and has been prepared for marketing purposes only. The information is believed to be correct but is not guaranteed. Changes may be made during construction and dimensions, areas, fittings and finishes are subject to change in accordance with the contract for sale. Prospective purchasers must rely on their contract for sale for the list of inclusions and other details.



Unit 10 end unit

Living - 18.10 sq.mts.

Dining - 10.40 sq.mts

Kitchen - 7.10 sq.mts

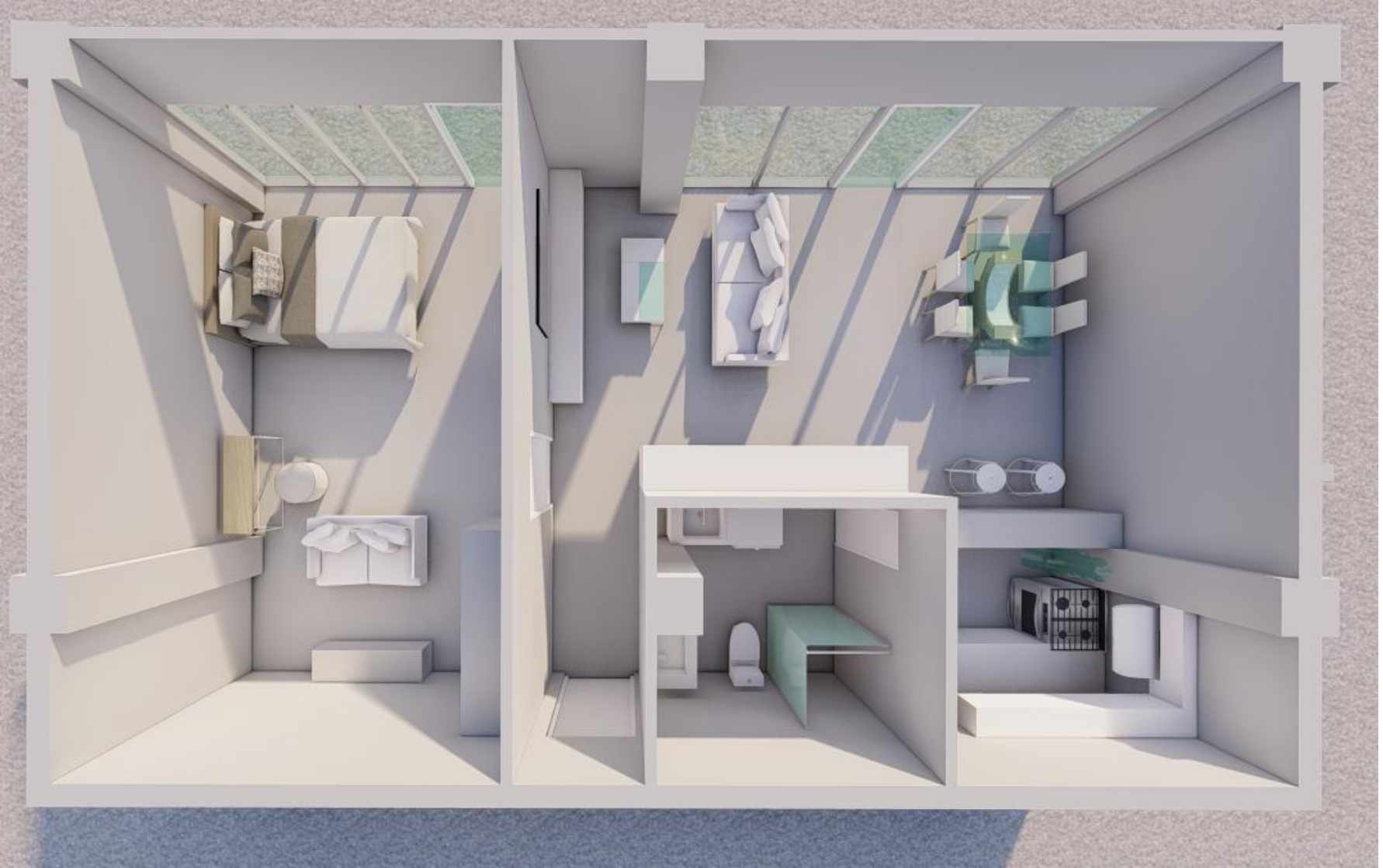
T & B - 6.75 sq.mts

Bedroom-25.80 sq.mts.

Carpark - 20.35 sq.mts.

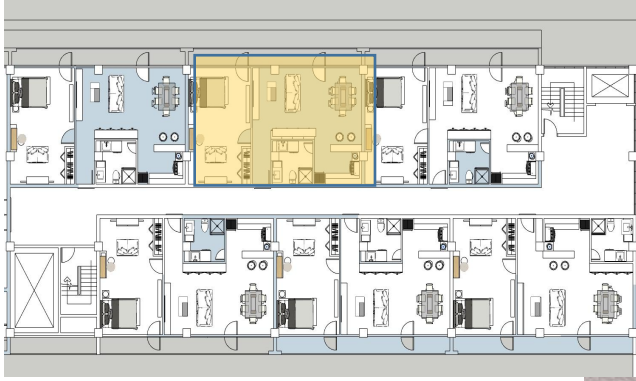
Veranda - 11.00 sq.mts.

TOTAL - 99.50 SQ. MTS



212 NATHAN ST.

DISCLAIMER : This plan was produced prior to construction and has been prepared for marketing purposes only. The information is believed to be correct but is not guaranteed. Changes may be made during construction and dimensions, areas, fittings and finishes are subject to change in accordance with the contract for sale. Prospective purchasers must rely on their contract for sale for the list of inclusions and other details.



Unit 11 mid unit

Living - 18.10 sq.mts.

Dining - 10.40 sq.mts

Kitchen - 7.10 sq.mts

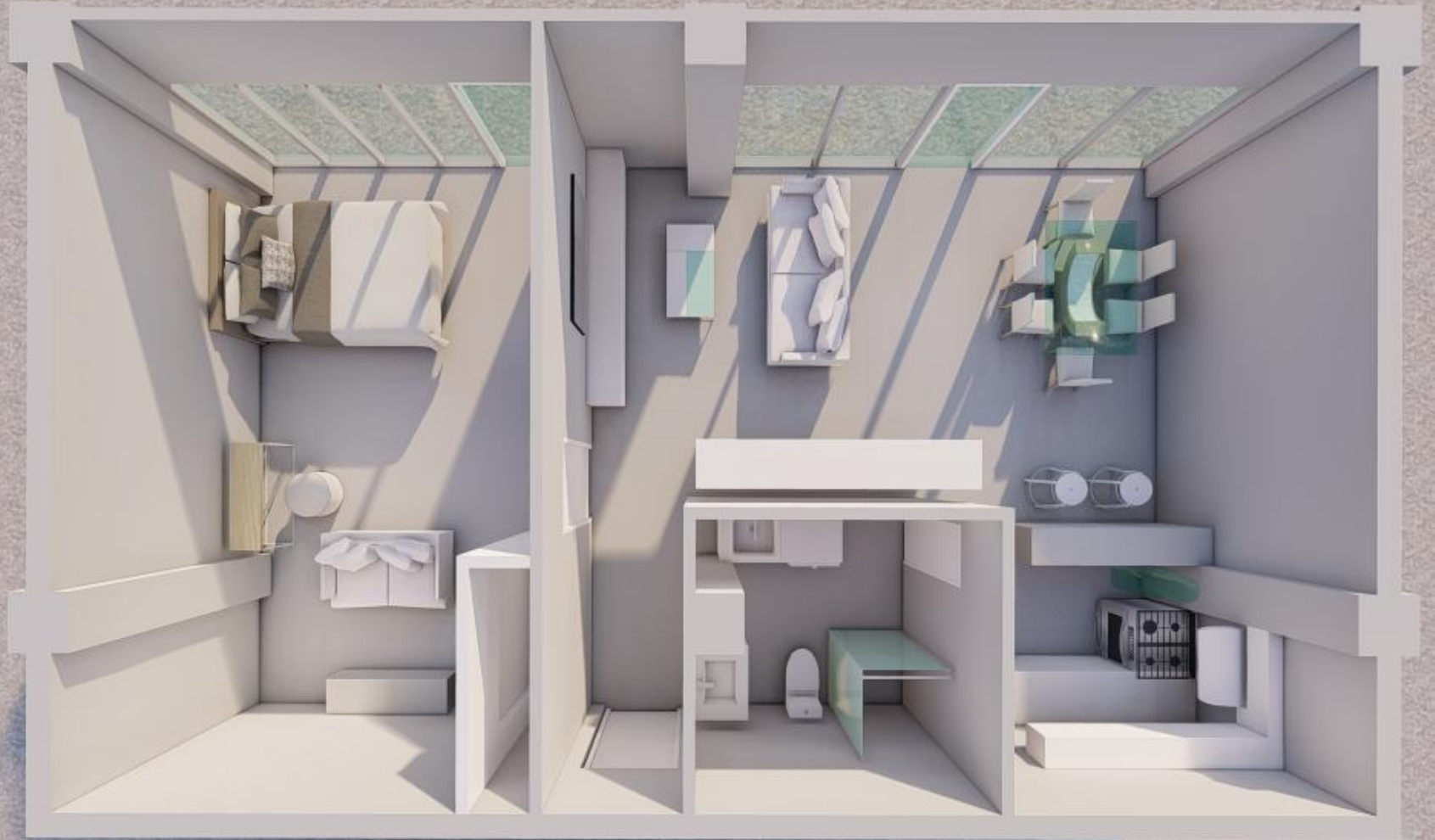
T & B - 6.75 sq.mts

Bedroom-25.80 sq.mts.

Carpark - 20.35 sq.mts.

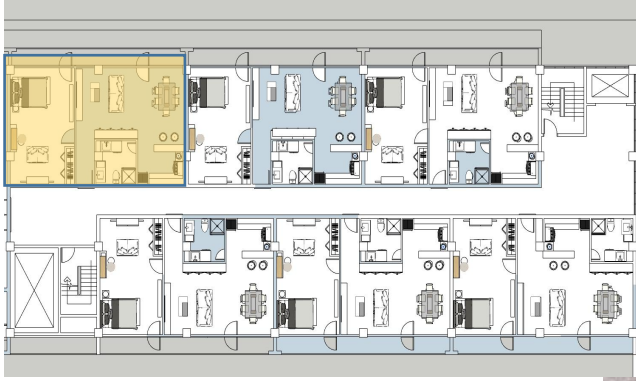
Veranda - 11.00 sq.mts.

TOTAL - 99.50 SQ. MTS.



212 NATHAN ST.

DISCLAIMER : This plan was produced prior to con_x0002_struction and has been prepared for marketing purposes only. The information is believed to be correct but is not guaranteed. Changes may be made during construction and dimensions, areas, fittings and finishes are subject to change in ac_x0002_cordance with the contract for sale. Prospective purchasers must rely on their contract for sale for the list of inclusions and other details.



Unit 12 end unit

Living - 18.10 sq.mts.

Dining - 10.40 sq.mts

Kitchen - 7.10 sq.mts

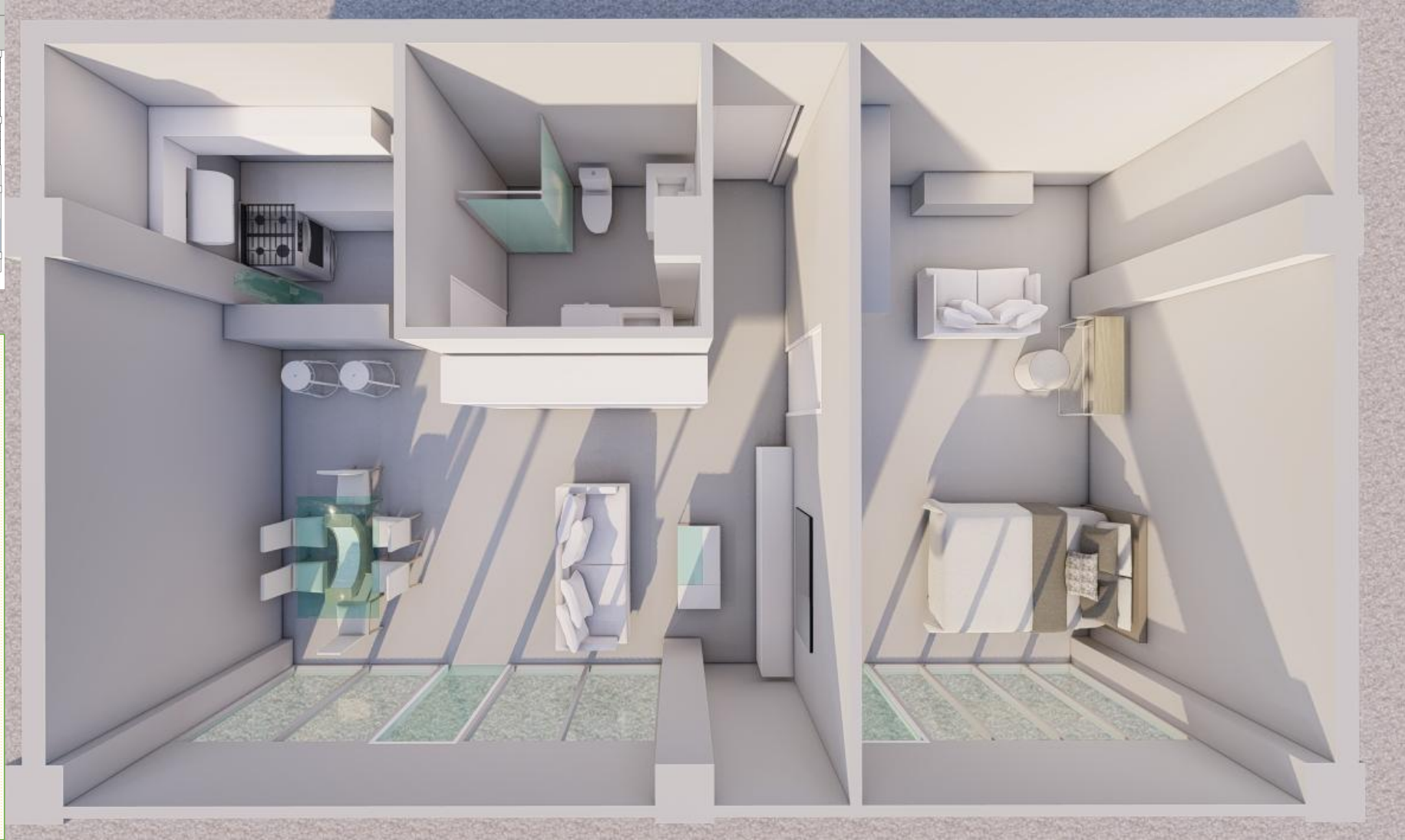
T & B - 6.75 sq.mts

Bedroom-25.80 sq.mts.

Carpark - 20.35 sq.mts.

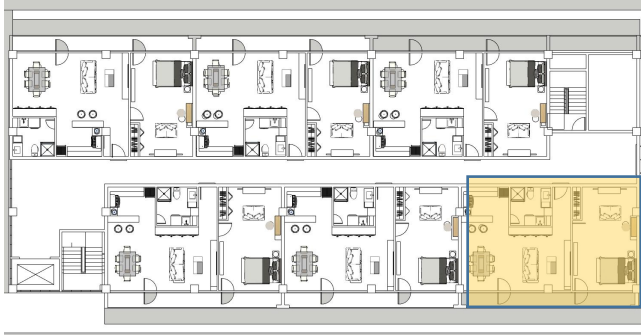
Veranda - 11.00 sq.mts.

TOTAL - 99.50 SQ. MTS



212 NATHAN ST.

DISCLAIMER : This plan was produced prior to construction and has been prepared for marketing purposes only. The information is believed to be correct but is not guaranteed. Changes may be made during construction and dimensions, areas, fittings and finishes are subject to change in accordance with the contract for sale. Prospective purchasers must rely on their contract for sale for the list of inclusions and other details.



Unit 13 end unit

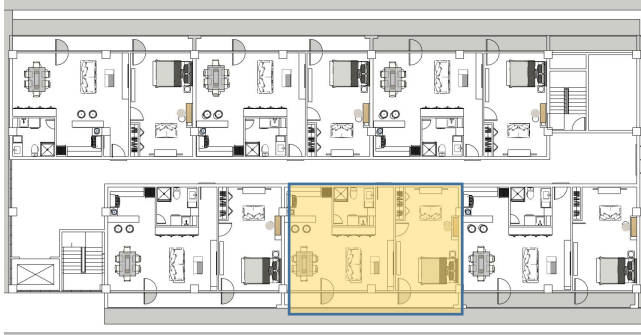
Living - 18.10 sq.mts.
 Dining - 10.40 sq.mts
 Kitchen - 7.10 sq.mts
 T & B - 6.75 sq.mts
 Bedroom-25.80 sq.mts.
 Carpark - 20.35 sq.mts.
 Veranda - 11.00 sq.mts.

TOTAL - 99.50 SQ. MTS



212 NATHAN ST.

DISCLAIMER : This plan was produced prior to construction and has been prepared for marketing purposes only. The information is believed to be correct but is not guaranteed. Changes may be made during construction and dimensions, areas, fittings and finishes are subject to change in accordance with the contract for sale. Prospective purchasers must rely on their contract for sale for the list of inclusions and other details.



Unit 14 mid unit

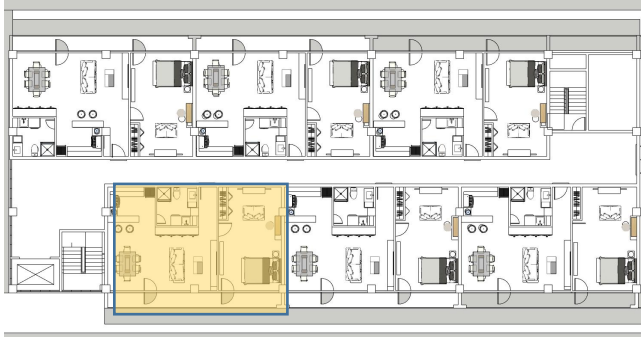
Living - 18.10 sq.mts.
Dining - 10.40 sq.mts
Kitchen - 7.10 sq.mts
T & B - 6.75 sq.mts
Bedroom-25.80 sq.mts.
Carpark - 20.35 sq.mts.
Veranda - 11.00 sq.mts.

TOTAL - 99.50 SQ. MTS



212 NATHAN ST.

DISCLAIMER : This plan was produced prior to construction and has been prepared for marketing purposes only. The information is believed to be correct but is not guaranteed. Changes may be made during construction and dimensions, areas, fittings and finishes are subject to change in accordance with the contract for sale. Prospective purchasers must rely on their contract for sale for the list of inclusions and other details.



Unit 15 end unit

Living - 18.10 sq.mts.

Dining - 10.40 sq.mts

Kitchen - 7.10 sq.mts

T & B - 6.75 sq.mts

Bedroom-25.80 sq.mts.

Carpark - 20.35 sq.mts.

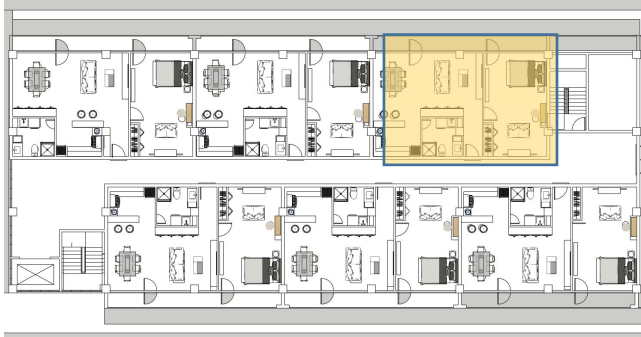
Veranda - 11.00 sq.mts.

TOTAL - 99.50 SQ. MTS



212 NATHAN ST.

DISCLAIMER : This plan was produced prior to construction and has been prepared for marketing purposes only. The information is believed to be correct but is not guaranteed. Changes may be made during construction and dimensions, areas, fittings and finishes are subject to change in accordance with the contract for sale. Prospective purchasers must rely on their contract for sale for the list of inclusions and other details.



Unit 16 end unit

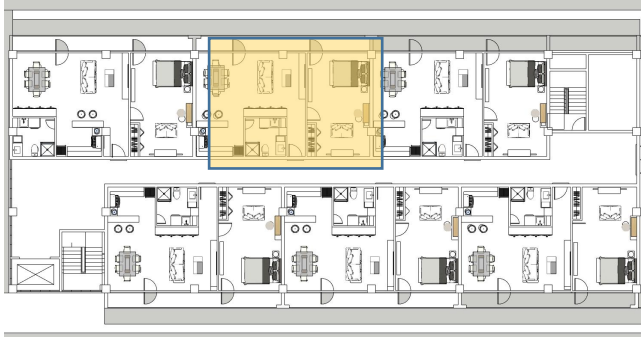
Living - 18.10 sq.mts.
Dining - 10.40 sq.mts
Kitchen - 7.10 sq.mts
T & B - 6.75 sq.mts
Bedroom-25.80 sq.mts.
Carpark - 20.35 sq.mts.
Veranda - 11.00 sq.mts.

TOTAL - 99.50 SQ. MTS



212 NATHAN ST.

DISCLAIMER : This plan was produced prior to construction and has been prepared for marketing purposes only. The information is believed to be correct but is not guaranteed. Changes may be made during construction and dimensions, areas, fittings and finishes are subject to change in accordance with the contract for sale. Prospective purchasers must rely on their contract for sale for the list of inclusions and other details.



Unit 17 mid unit

Living - 18.10 sq.mts.

Dining - 10.40 sq.mts

Kitchen - 7.10 sq.mts

T & B - 6.75 sq.mts

Bedroom-25.80 sq.mts.

Carpark - 20.35 sq.mts.

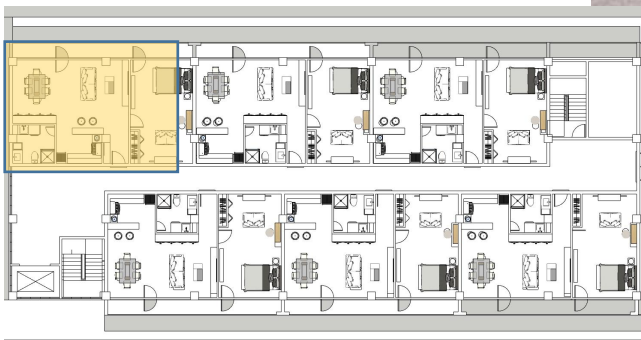
Veranda - 11.00 sq.mts.

TOTAL - 99.50 SQ. MTS



212 NATHAN ST.

DISCLAIMER : This plan was produced prior to construction and has been prepared for marketing purposes only. The information is believed to be correct but is not guaranteed. Changes may be made during construction and dimensions, areas, fittings and finishes are subject to change in accordance with the contract for sale. Prospective purchasers must rely on their contract for sale for the list of inclusions and other details.



Unit 18 end unit

Living - 18.10 sq.mts.

Dining - 10.40 sq.mts

Kitchen - 7.10 sq.mts

T & B - 6.75 sq.mts

Bedroom-25.80 sq.mts.

Carpark - 20.35 sq.mts.

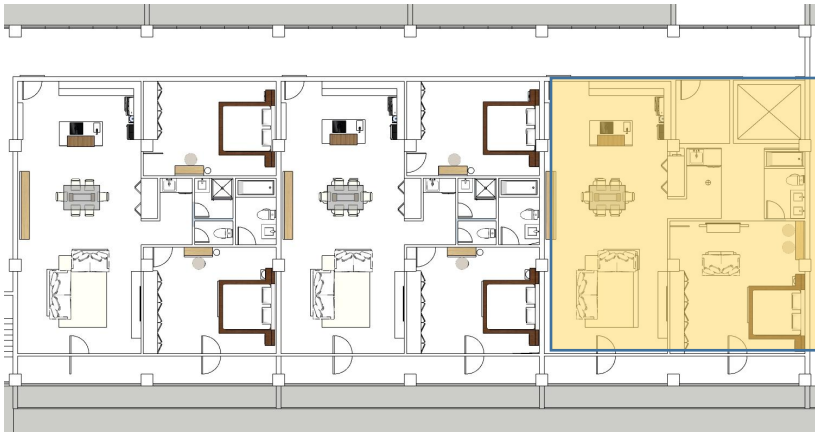
Veranda - 11.00 sq.mts.

TOTAL - 99.50 SQ. MTS



212 NATHAN ST.

DISCLAIMER : This plan was produced prior to construction and has been prepared for marketing purposes only. The information is believed to be correct but is not guaranteed. Changes may be made during construction and dimensions, areas, fittings and finishes are subject to change in accordance with the contract for sale. Prospective purchasers must rely on their contract for sale for the list of inclusions and other details.



Unit 19 end unit ENSUITE

Living - 18.10 sq.mts.

Dining - 10.40 sq.mts

Kitchen - 7.10 sq.mts

T & B - 15.10 sq.mts

Bedroom - 25.80 sq.mts

Carpark - 20.35 sq.mts.

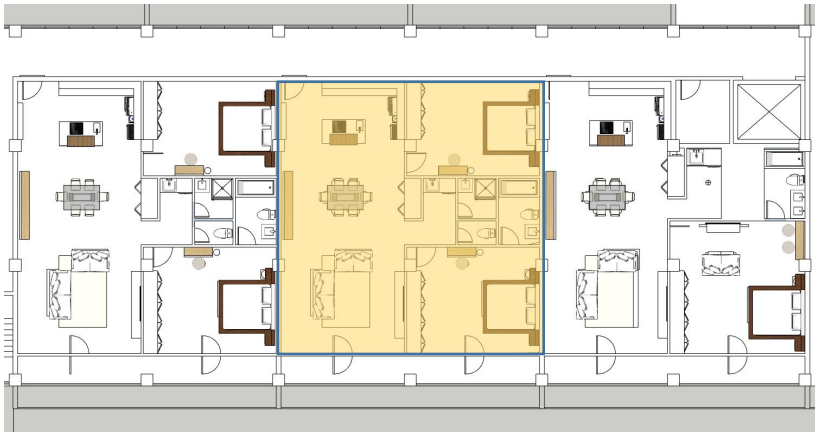
Veranda - 11.00 sq.mts.

TOTAL - 107.85 SQ. MTS



212 NATHAN ST.

DISCLAIMER : This plan was produced prior to con_x0002_struction and has been prepared for marketing purposes only. The information is believed to be correct but is not guaranteed. Changes may be made during construction and dimensions, areas, fittings and finishes are subject to change in ac_x0002_cordance with the contract for sale. Prospective purchasers must rely on their contract for sale for the list of inclusions and other details.



Unit 20 mid unit ENSUITE

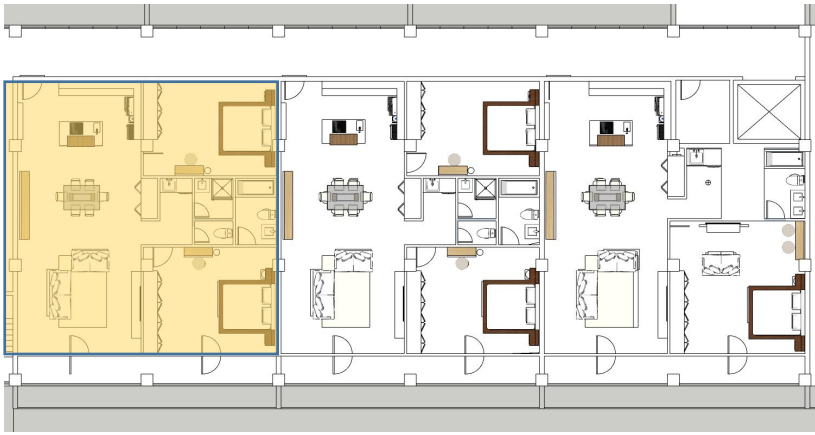
Living - 18.10 sq.mts.
 Dining - 10.40 sq.mts
 Kitchen - 7.10 sq.mts
 T & B - 12.00 sq.mts
 Bedroom - 25.80 sq.mts
 Bedroom - 25.80 sq.mts
 Carpark - 20.35 sq.mts.
 Veranda - 11.00 sq.mts.

TOTAL - 129.85 SQ. MTS

212 NATHAN ST.



DISCLAIMER : This plan was produced prior to construction and has been prepared for marketing purposes only. The information is believed to be correct but is not guaranteed. Changes may be made during construction and dimensions, areas, fittings and finishes are subject to change in accordance with the contract for sale. Prospective purchasers must rely on their contract for sale for the list of inclusions and other details.



Unit 21 end unit ENSUITE

Living - 18.10 sq.mts.

Dining - 10.40 sq.mts

Kitchen - 7.10 sq.mts

T & B - 12.60 sq.mts

Bedroom - 25.80 sq.mts

Bedroom - 25.80 sq.mts

Carpark - 20.35 sq.mts.

Veranda - 11.00 sq.mts.

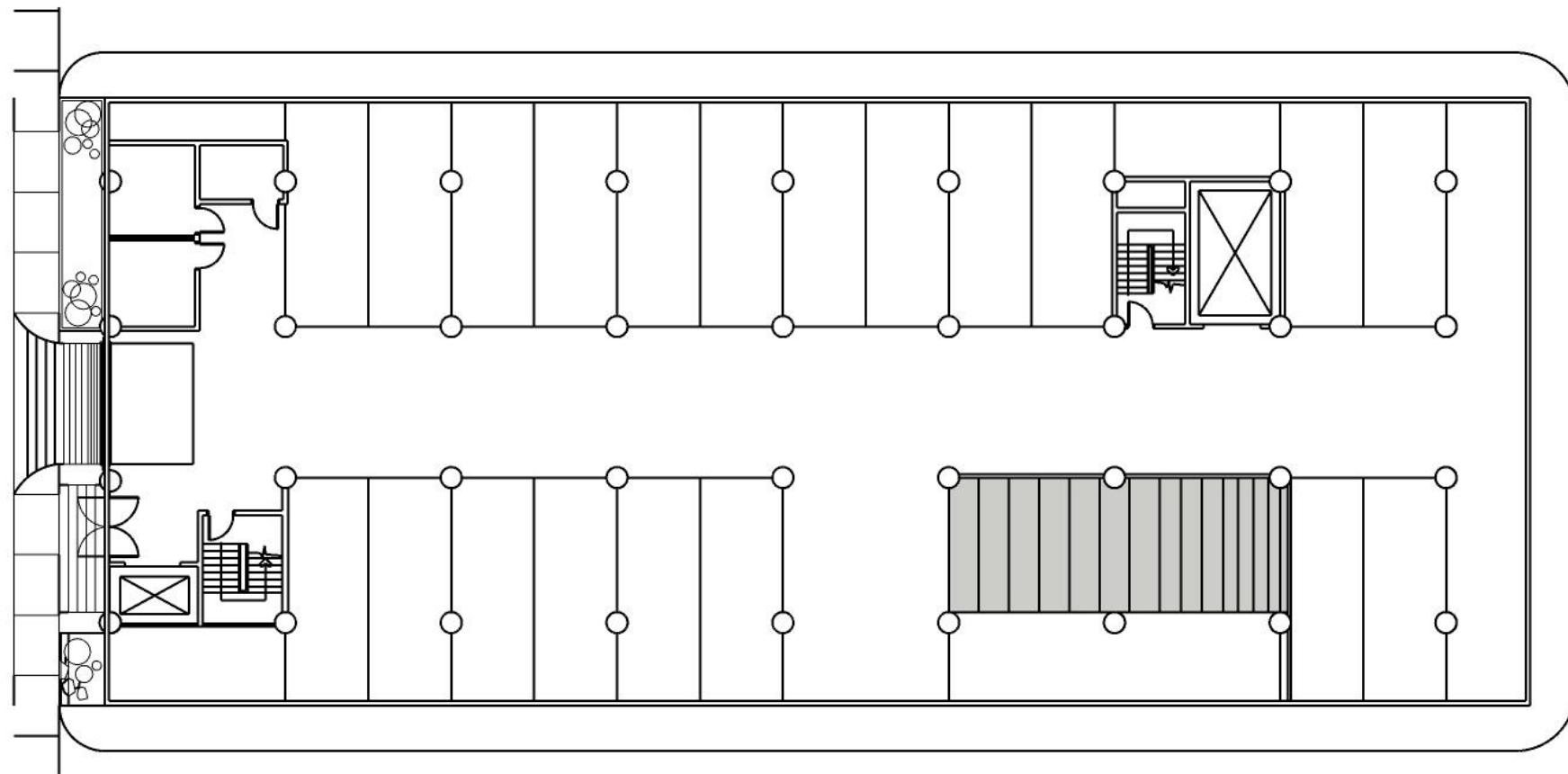
TOTAL - 131.35 SQ. MTS



212 NATHAN ST.

DISCLAIMER : This plan was produced prior to construction and has been prepared for marketing purposes only. The information is believed to be correct but is not guaranteed. Changes may be made during construction and dimensions, areas, fittings and finishes are subject to change in accordance with the contract for sale. Prospective purchasers must rely on their contract for sale for the list of inclusions and other details.

GROUND FLOOR
20 SPACES

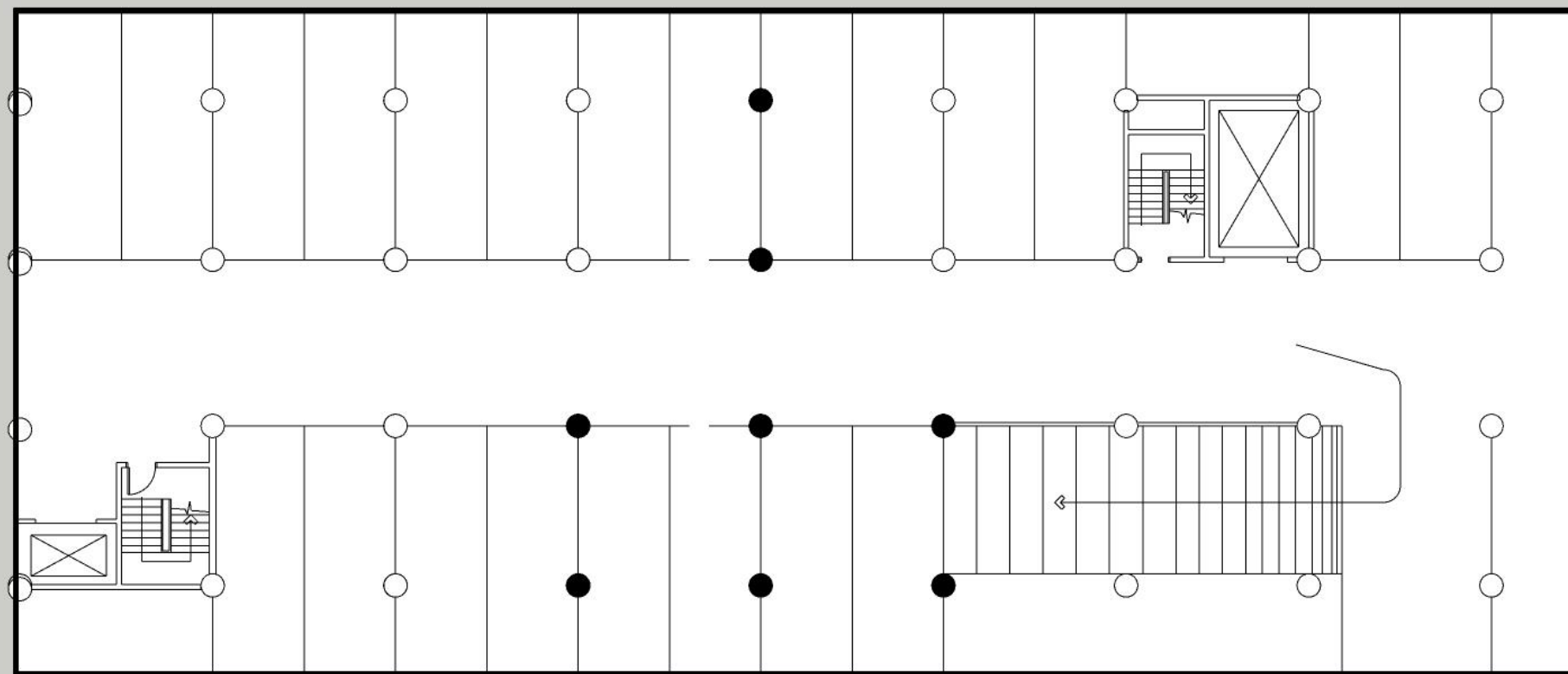


212 NATHAN ST.

DISCLAIMER : This plan was produced prior to construction and has been prepared for marketing purposes only. The information is believed to be correct but is not guaranteed. Changes may be made during construction and dimensions, areas, fittings and finishes are subject to change in accordance with the contract for sale. Prospective purchasers must rely on their contract for sale for the list of inclusions and other details.

BASEMENT

22 SPACES



212 NATHAN ST.

DISCLAIMER : This plan was produced prior to construction and has been prepared for marketing purposes only. The information is believed to be correct but is not guaranteed. Changes may be made during construction and dimensions, areas, fittings and finishes are subject to change in accordance with the contract for sale. Prospective purchasers must rely on their contract for sale for the list of inclusions and other details.

FITTINGS



212 NATHAN ST.

DISCLAIMER : This plan was produced prior to con_x0002_struction and has been prepared for marketing purposes only. The information is believed to be correct but is not guaranteed. Changes may be made during construction and dimensions, areas, fittings and finishes are subject to change in ac_x0002_cordance with the contract for sale. Prospective purchasers must rely on their contract for sale for the list of inclusions and other details.

FINISHES

INTERNAL

GENERAL

Air-conditioning in living areas and bedrooms

Ceiling fans to all bedrooms

Television & TV Points in living areas and main bedroom

LED down lights throughout

Mechanical Ventilation in all bathrooms and laundries

212 NATHAN ST.

DISCLAIMER : This plan was produced prior to construction and has been prepared for marketing purposes only. The information is believed to be correct but is not guaranteed. Changes may be made during construction and dimensions, areas, fittings and finishes are subject to change in accordance with the contract for sale. Prospective purchasers must rely on their contract for sale for the list of inclusions and other details.

FINISHES

INTERNAL

KITCHEN

High Quality polythene with laminate cabinetry

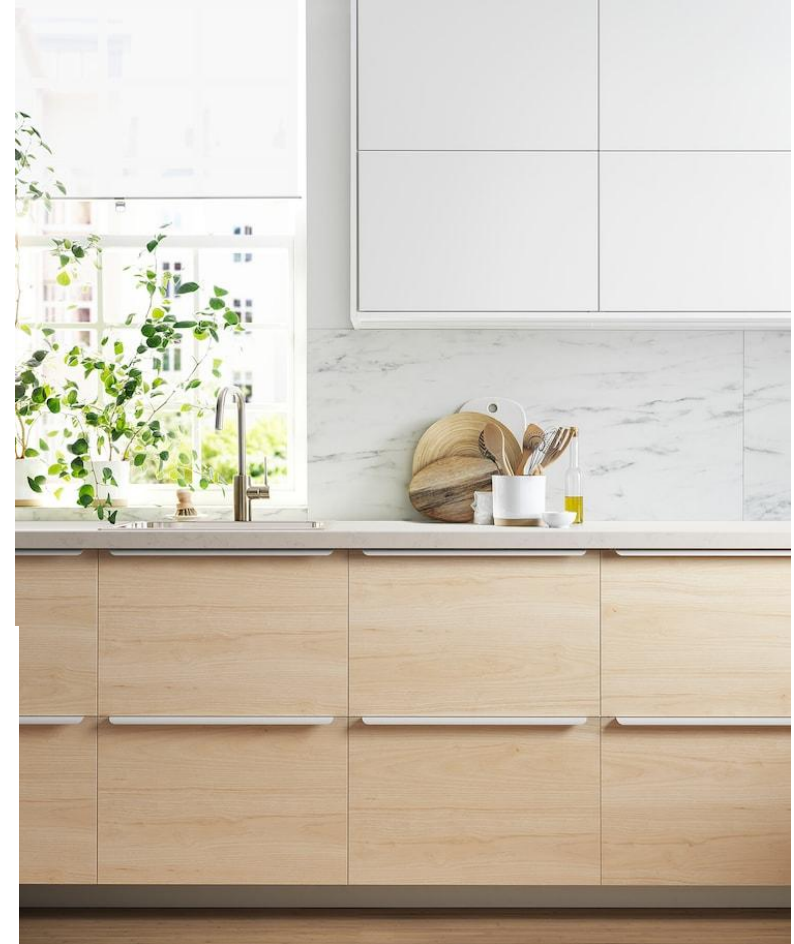
Smart stone bench top

Stainless steel appliances includes dishwasher,

oven, cooktop and range hood

Tiled splash back

Kitchen Sink & mixer



212 NATHAN ST.

DISCLAIMER : This plan was produced prior to con_x0002_struction and has been prepared for marketing purposes only. The information is believed to be correct but is not guaranteed. Changes may be made during construction and dimensions, areas, fittings and finishes are subject to change in ac_x0002_cordance with the contract for sale. Prospective purchasers must rely on their contract for sale for the list of inclusions and other details.

FINISHES

INTERNAL

BATHROOMS

Porcelain floor & wall tiles

Custom designed vanity with storage below

Frameless Glass shower screen

Shower head

Wall shower mixer

Toilet suite

Bathroom assessories - towel rails, toilet roll holders.



212 NATHAN ST.

DISCLAIMER : This plan was produced prior to con_x0002_struction and has been prepared for marketing purposes only. The information is believed to be correct but is not guaranteed. Changes may be made during construction and dimensions, areas, fittings and finishes are subject to change in ac_x0002_cordance with the contract for sale. Prospective purchasers must rely on their contract for sale for the list of inclusions and other details.

FINISHES

INTERNAL

ENSUITES

Porcelain floor & wall tiles

Custom designed vanity with storage below.

Frameless Glass shower screen

Bath & bath mixers

Shower head

Wall shower mixer

Toilet suite

Bathroom assessories - towel rails,
toilet roll holders.



212 NATHAN ST.

DISCLAIMER : This plan was produced prior to construction and has been prepared for marketing purposes only. The information is believed to be correct but is not guaranteed. Changes may be made during construction and dimensions, areas, fittings and finishes are subject to change in accordance with the contract for sale. Prospective purchasers must rely on their contract for sale for the list of inclusions and other details.

FINISHES

INTERNAL

LAUNDRY

Porcelain floor & wall tiles

Freestanding Laundry

Sink cabinet

Mixer

WARDROBES

Mirrored Sliding Doors

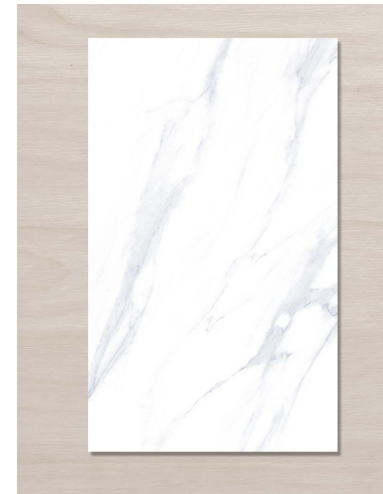
Shelf and hanging rails

FLOORS

Reinforced concrete slab

Tile & Timber floors to living areas

Carpet to all bedrooms



212 NATHAN ST.

DISCLAIMER : This plan was produced prior to construction and has been prepared for marketing purposes only. The information is believed to be correct but is not guaranteed. Changes may be made during construction and dimensions, areas, fittings and finishes are subject to change in accordance with the contract for sale. Prospective purchasers must rely on their contract for sale for the list of inclusions and other details.

FINISHES

INTERNAL

WALLS & CEILINGS

Plasterboard sheeted walls with flat paint finish

INTERNAL DOORS

Hollow core flush panel door with satin paint finish

EXTERNAL

WALLS

Concrete walls with rendered paint finish.
Feature Light weight Cladding with
exterior grade paint finish



212 NATHAN ST.

DISCLAIMER : This plan was produced prior to con_x0002_struction and has been prepared for marketing purposes only. The information is believed to be correct but is not guaranteed. Changes may be made during construction and dimensions, areas, fittings and finishes are subject to change in ac_x0002_cordance with the contract for sale. Prospective purchasers must rely on their contract for sale for the list of inclusions and other details.

FINISHES

EXTERNAL

PRIVACY SCREENS

Vertical Timber screens

WINDOWS

Powder coat finish aluminum
framed
windows and sliding doors

ROOF

Reinforced concrete roof with
Landscaping and yoga lawn
Tiled terrace areas throughout



212 NATHAN ST.

DISCLAIMER : This plan was produced prior to construction and has been prepared for marketing purposes only. The information is believed to be correct but is not guaranteed. Changes may be made during construction and dimensions, areas, fittings and finishes are subject to change in accordance with the contract for sale. Prospective purchasers must rely on their contract for sale for the list of inclusions and other details.

FINISHES

EXTERNAL

DECKING

Modwood decking finish



DRIVEWAY

Concrete grey finish to driveways and footpaths

CAR PARKING

Reinforced concrete floor
with number
line marking



212 NATHAN ST.

DISCLAIMER : This plan was produced prior to con_x0002_struction and has been prepared for marketing purposes only. The information is believed to be correct but is not guaranteed. Changes may be made during construction and dimensions, areas, fittings and finishes are subject to change in ac_x0002_cordance with the contract for sale. Prospective purchasers must rely on their contract for sale for the list of inclusions and other details.